

# HYVA CYLINDER

714 07 853



type: UMB 191-6-2980-K270-60-3/4"-HC

tipping weight: 20-38 ton

page # 1 / 2

Stage diameters 191 169 149 129 110 91	front view cylinder		<table border="1"> <tr><td>A</td><td>245</td></tr> <tr><td>ØC</td><td>215</td></tr> <tr><td>G<sup>1</sup></td><td>749</td></tr> <tr><td>I</td><td>479</td></tr> <tr><td>K<sup>1</sup></td><td>270</td></tr> <tr><td>M<sup>1</sup></td><td>106</td></tr> <tr><td>ØP</td><td>110</td></tr> <tr><td>ØQ</td><td>75</td></tr> <tr><td>S</td><td>491</td></tr> <tr><td>ØW</td><td>60</td></tr> <tr><td>X</td><td>45</td></tr> </table>	A	245	ØC	215	G <sup>1</sup>	749	I	479	K <sup>1</sup>	270	M <sup>1</sup>	106	ØP	110	ØQ	75	S	491	ØW	60	X	45
A	245																								
ØC	215																								
G <sup>1</sup>	749																								
I	479																								
K <sup>1</sup>	270																								
M <sup>1</sup>	106																								
ØP	110																								
ØQ	75																								
S	491																								
ØW	60																								
X	45																								

<sup>1</sup>including 20 mm pull-out [tol. -5; +30 mm]

<sup>2</sup>cylinder is delivered including oil inlet swivel adapter and cup

## specifications

total stroke <sup>1</sup>	2980 mm
dry weight cylinder only	148 kg
total volume	52.2 L
working volume	48.5 L
maximum pressure	220 bar
maximum pump flow	98 l/min
maximum allowable thrust first stage <sup>3</sup>	30.0 ton
oil inlet	3/4" BSP

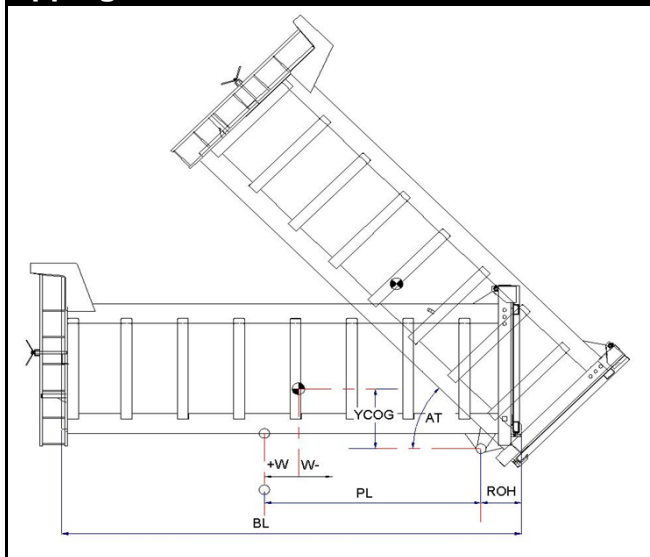
## technical notes

This cylinder is a lifting device only and may not be used as a structural member or be subjected to side load. Sideload and/or poor alignment might result in cylinder leakage. Hyva therefore strongly recommends the use of a cradle, even in instances where the cylinder only tips to the rear or to the side. The cylinder is painted black RAL9005. For suitable hydraulic oils, please refer to data sheet OIL-0011. For details of available brackets and cradles, please refer data sheet 015BRA06.

Detailed calculations can be made using the HYVA Tipper Program, freely available from [tipper.hyva.com](http://tipper.hyva.com).

<sup>3</sup>The cylinder thrust on the first stage (from the HYVA Tipper Program) must not exceed the maximum allowable (see specifications above).

## tipping view



## tipping weight

PL	3890			mm	3440		
YCOG	700			mm	700		
ROH	700			mm	700		
BL	9180	8350	7650	mm	8280	7530	6900
CYL w.r.t. COG (W)	0	420	770	mm	0	380	690
	Tipping weight for full stroke of 46°				Tipping weight for full stroke of 52°		
Tipping weight	20	23	27	ton	22	26	30
	Tipping weight for second last stage, up to 38°				Tipping weight for 2nd last stage, up to 43°		
Tipping weight	27	34	37	ton	30	34	38

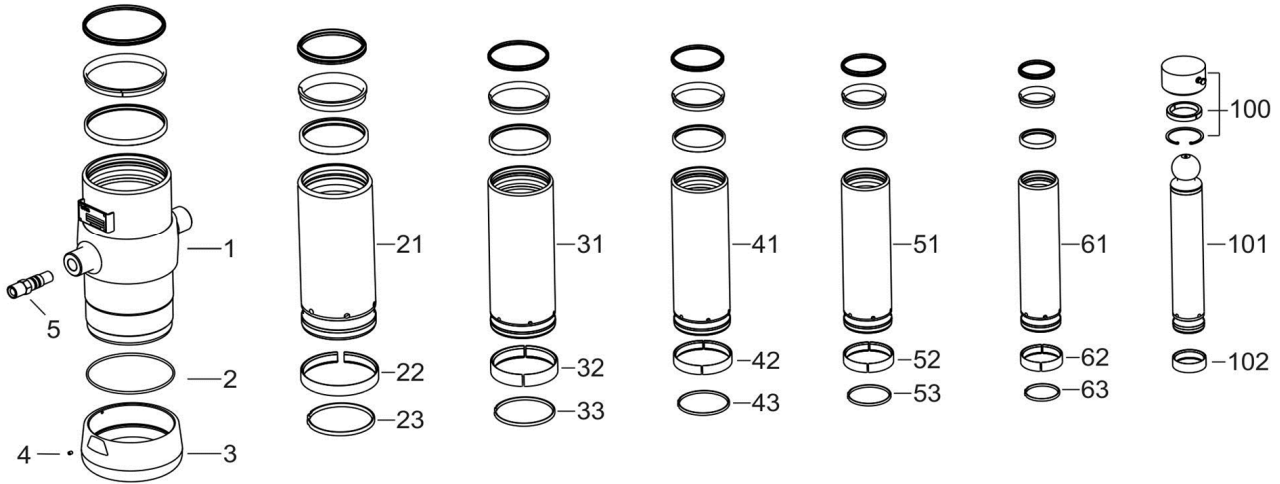
# HYVA CYLINDER

714 07 853

type

UMB 191-6-2980-K270-60-3/4"-HC

page # 2 / 2



## Spare part list

Pos	Part no.	Description	Qty.
1	73508750	BASE 214-0612-N0164	1
2	01226840	O-RING 208 X 4 70 SHORE	1
3	73101060	THREADED BOTTOM UM 214	1
4	01792571	LOCKING SCREW M6X12 INT. HEX. DIN 916	1
5	73103002	OIL INLET ADAPTOR UM 3/4"OT+O-RING	1
21	73607751	STAGE 191-0612-HC	1
22	71807191 K	SLIDER FL 191	1
23	71813191 K	LIFTRING FL 191x5	1
31	73606751	STAGE 169-0612-HC	1
32	71807169 K	SLIDER FL 169	1
33	71813169 K	LIFTRING FL 169x5	1
41	73605751	STAGE 149-0612-HC	1
42	71807149 K	SLIDER FL 149	1
43	71812149 K	LIFTRING FL 149/HP 150	1
51	73604751	STAGE 129-0612-HC	1
52	71807129 K	SLIDER FL 129/GF 129 (2 X 1/2)	1
53	71812129 K	LIFTRING FL 129/HP 129	1

## Spare part list

Pos	Part no.	Description	Qty.
61	73603751	STAGE 110-0612-HC	1
62	71807110 K	SLIDER FL 110/GF 110 (2 X 1/2)	1
63	71812110 K	LIFTRING FL 110	1
100	01745103	RETAINER KIT UMB D.75	1
101	73402751	PISTON B 091-0654-HC	1
102	71807091 K	SLIDER FL 091 (2 X 1/2)	1

## Seal kit complete

Part no.	Description
719 04 761K	Complete packset: Consists of all packsets with packset grease and o-ring.